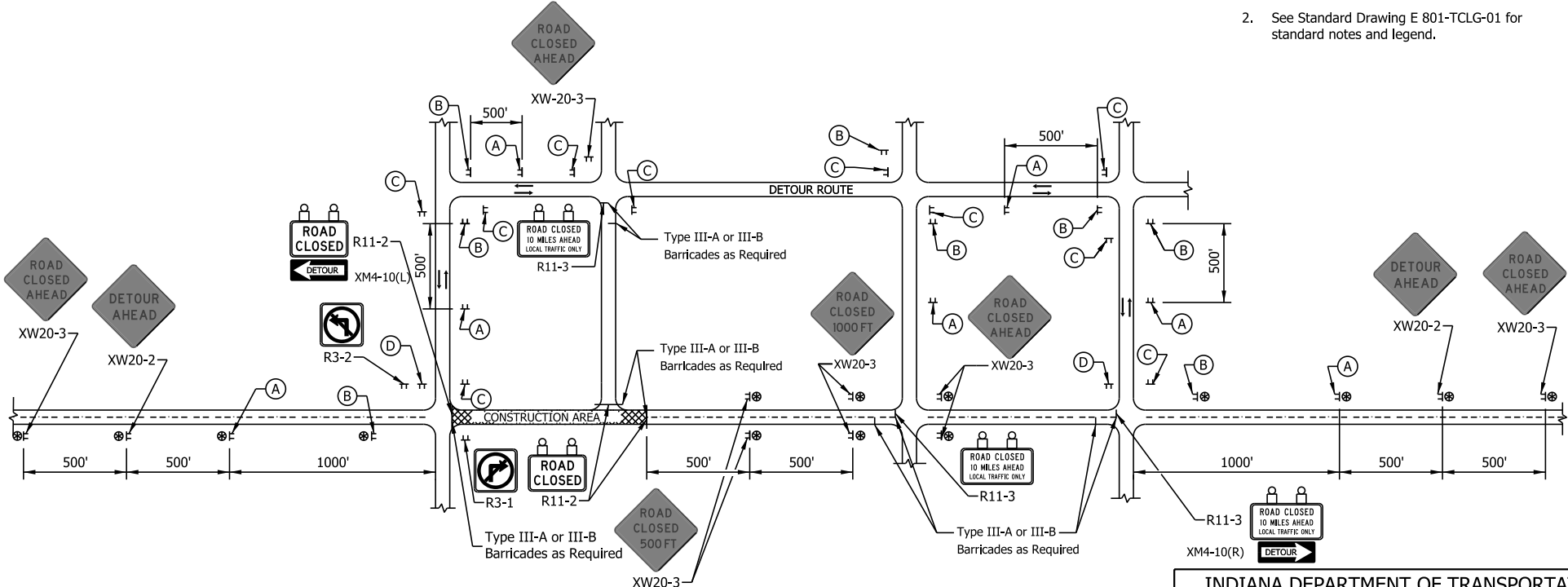
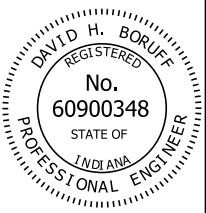


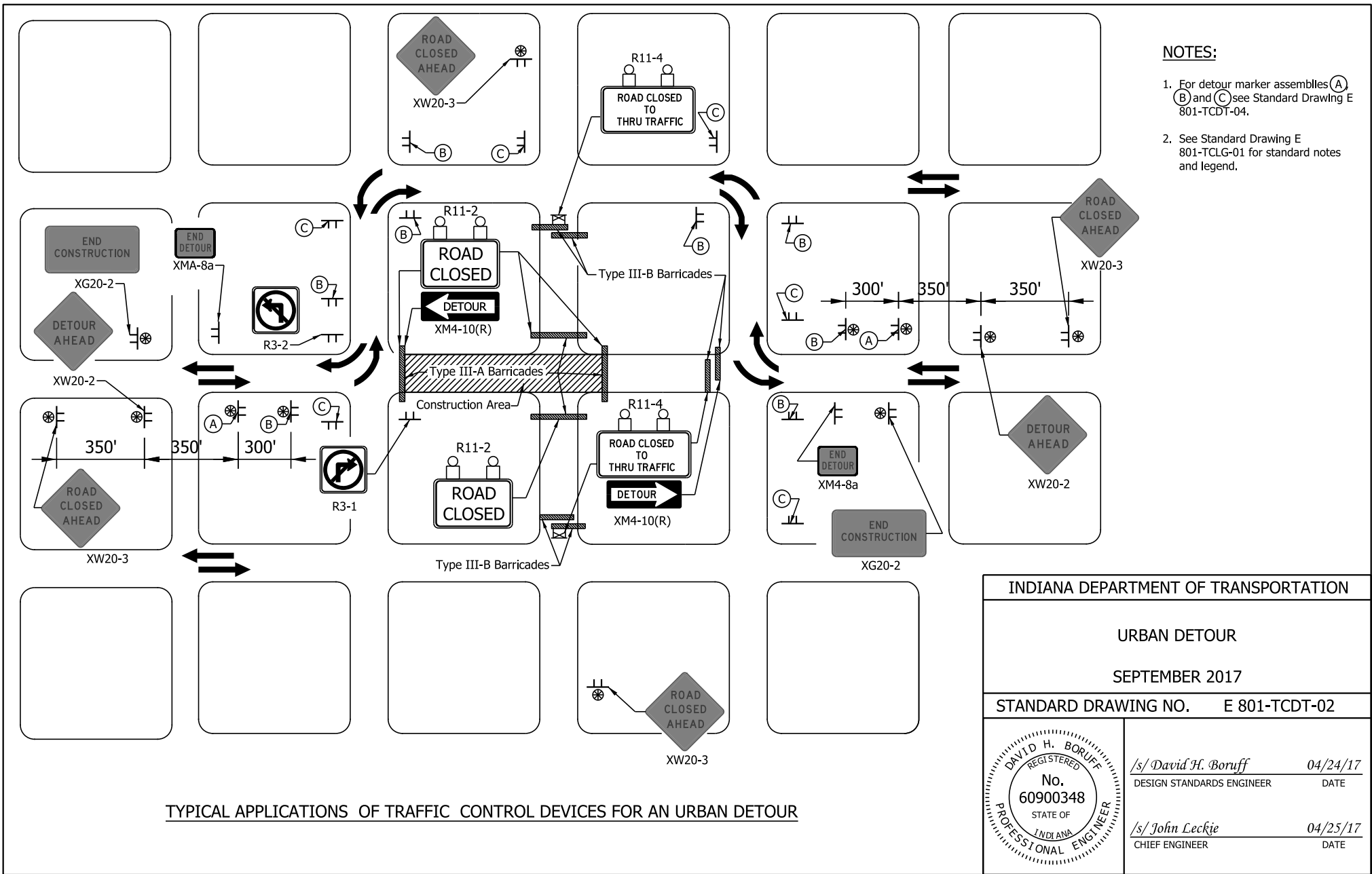
NOTES:

1. For detour route marker assemblies (A),(B),(C) and (D) see Standard Drawing E 801-TCDT-04.
2. See Standard Drawing E 801-TCLG-01 for standard notes and legend.



TYPICAL APPLICATIONS OF TRAFFIC CONTROL DEVICES FOR A RURAL DETOUR

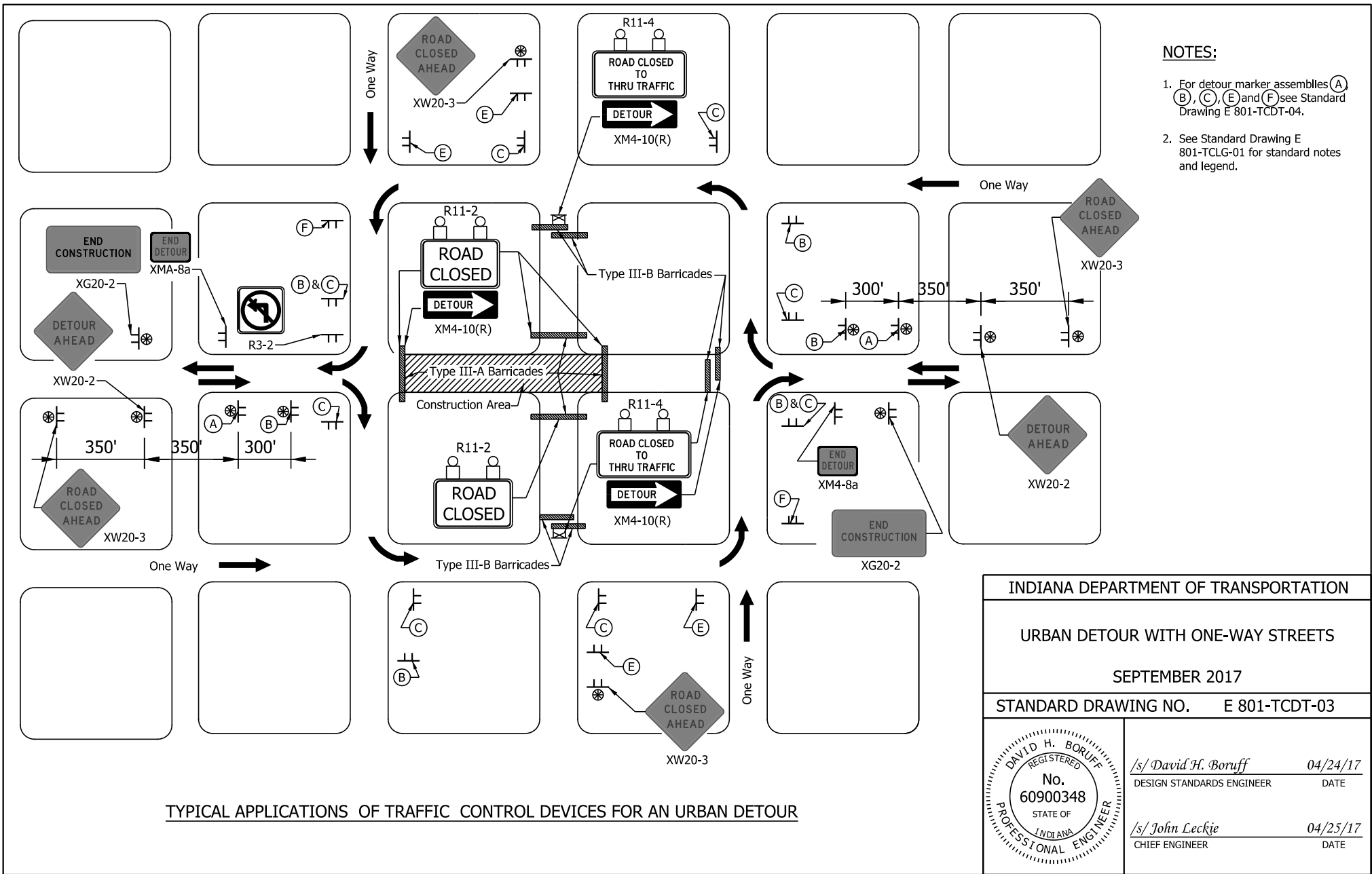
INDIANA DEPARTMENT OF TRANSPORTATION									
RURAL DETOUR									
SEPTEMBER 2017									
STANDARD DRAWING NO. E 801-TCDT-01									
	<table style="width: 100%; border-collapse: collapse;"> <tr> <td style="border-bottom: 1px solid black; padding: 2px;"><i>/s/ David H. Boruff</i></td> <td style="border-bottom: 1px solid black; padding: 2px;">04/24/17</td> </tr> <tr> <td style="font-size: small; padding: 2px;">DESIGN STANDARDS ENGINEER</td> <td style="font-size: small; padding: 2px;">DATE</td> </tr> <tr> <td style="border-bottom: 1px solid black; padding: 2px;"><i>/s/ John Leckie</i></td> <td style="border-bottom: 1px solid black; padding: 2px;">04/25/17</td> </tr> <tr> <td style="font-size: small; padding: 2px;">CHIEF ENGINEER</td> <td style="font-size: small; padding: 2px;">DATE</td> </tr> </table>	<i>/s/ David H. Boruff</i>	04/24/17	DESIGN STANDARDS ENGINEER	DATE	<i>/s/ John Leckie</i>	04/25/17	CHIEF ENGINEER	DATE
<i>/s/ David H. Boruff</i>	04/24/17								
DESIGN STANDARDS ENGINEER	DATE								
<i>/s/ John Leckie</i>	04/25/17								
CHIEF ENGINEER	DATE								

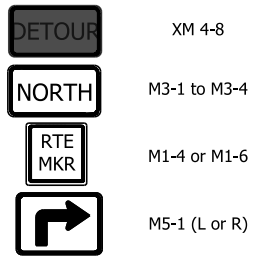


- NOTES:**
1. For detour marker assemblies (A), (B) and (C) see Standard Drawing E 801-TCDDT-04.
 2. See Standard Drawing E 801-TCLG-01 for standard notes and legend.

TYPICAL APPLICATIONS OF TRAFFIC CONTROL DEVICES FOR AN URBAN DETOUR

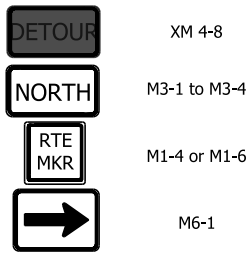
INDIANA DEPARTMENT OF TRANSPORTATION	
URBAN DETOUR	
SEPTEMBER 2017	
STANDARD DRAWING NO. E 801-TCDDT-02	
	/s/ David H. Boruff 04/24/17 DESIGN STANDARDS ENGINEER DATE
	/s/ John Leckie 04/25/17 CHIEF ENGINEER DATE





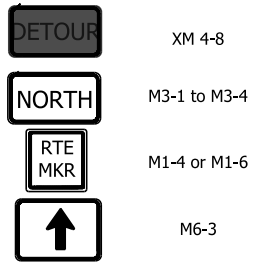
XM 4-8
M3-1 to M3-4
M1-4 or M1-6
M5-1 (L or R)

Ⓐ ADVANCE TURN DETOUR ROUTE MARKER ASSEMBLY ①



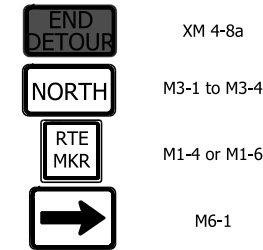
XM 4-8
M3-1 to M3-4
M1-4 or M1-6
M6-1

Ⓑ DIRECTIONAL DETOUR ROUTE MARKER ASSEMBLY ②



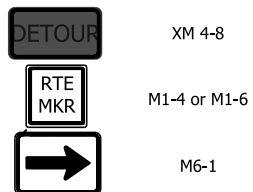
XM 4-8
M3-1 to M3-4
M1-4 or M1-6
M6-3

Ⓒ CONFIRMING DETOUR ROUTE MARKER ASSEMBLY ③



XM 4-8a
M3-1 to M3-4
M1-4 or M1-6
M6-1

Ⓓ END DETOUR ROUTE MARKER ASSEMBLY ④



XM 4-8
M1-4 or M1-6
M6-1

Ⓔ BI-DIRECTIONAL DETOUR ROUTE MARKER ASSEMBLY



XM 4-8
M1-4 or M1-6

Ⓕ BI-DIRECTIONAL CONFIRMING DETOUR ROUTE MARKER ASSEMBLY

STATE HIGHWAY / NUMBERED LOCAL HIGHWAY

NOTES:

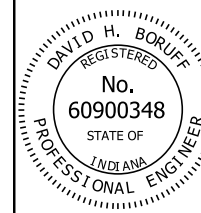
- ① Advance turn detour route marker assemblies shall be located as shown, or after the last cross street prior to the beginning of the detour, as directed.
- ② Directional detour route marker assemblies shall be located 100 ft. to 200 ft. in advance of all required turns within the detour limits.
- ③ Confirming detour route marker assemblies shall be located 200 ft. past all major intersections, as required, and shall be spaced a maximum of 3 mi. on a rural detour or 0.5 mi. on an urban detour on each leg of such detours. Confirming detour route marker assemblies shall be placed after a required turn when directed.
- ④ End detour route marker assemblies shall be located 100 ft. to 200 ft. in advance of the final turn of the detour.

INDIANA DEPARTMENT OF TRANSPORTATION

DETOUR ROUTE MARKER ASSEMBLIES

SEPTEMBER 2017

STANDARD DRAWING NO. E 801-TCDDT-04



/s/ David H. Boruff 04/24/17
DESIGN STANDARDS ENGINEER DATE

/s/ John Leckie 04/25/17
CHIEF ENGINEER DATE